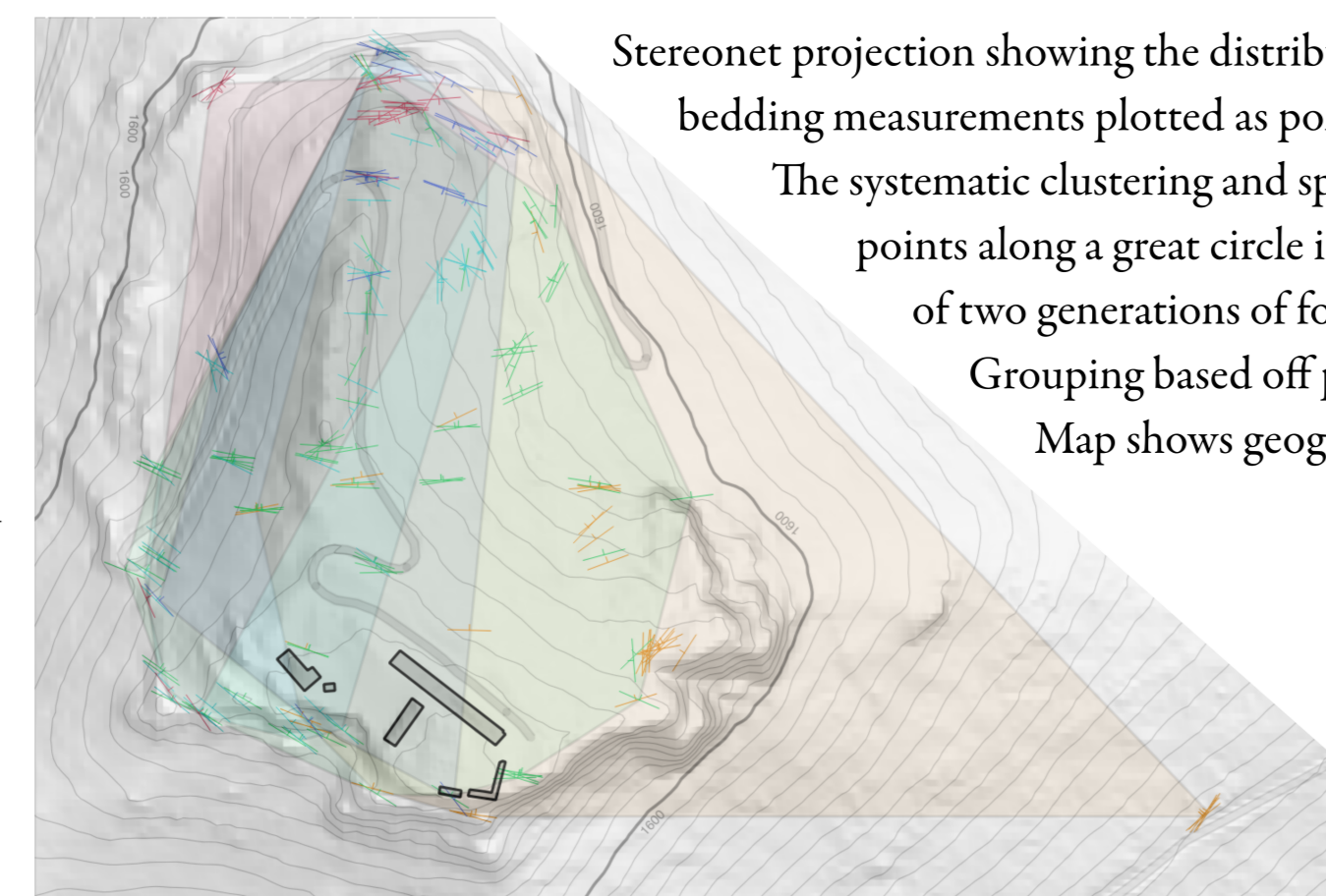
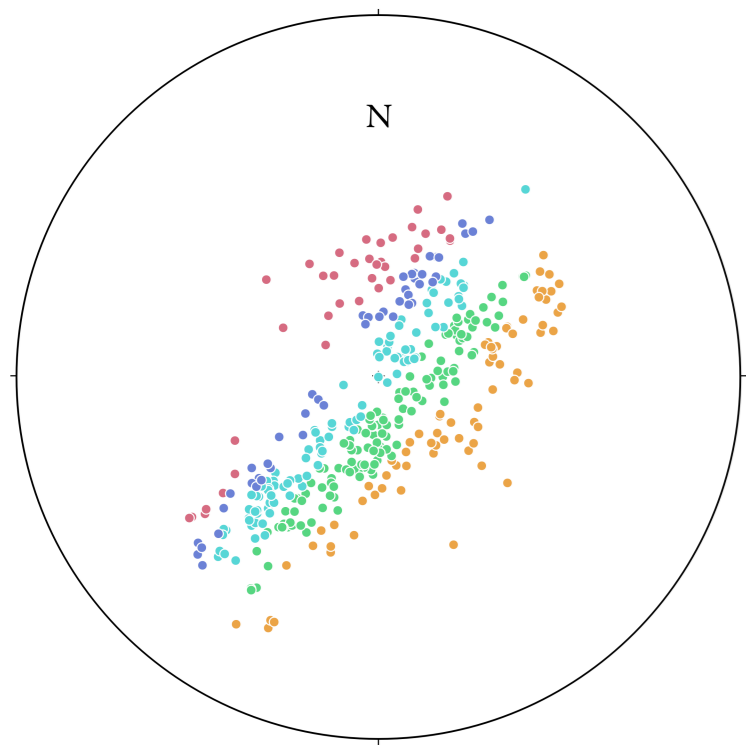


Stereonet of Peña de Francia

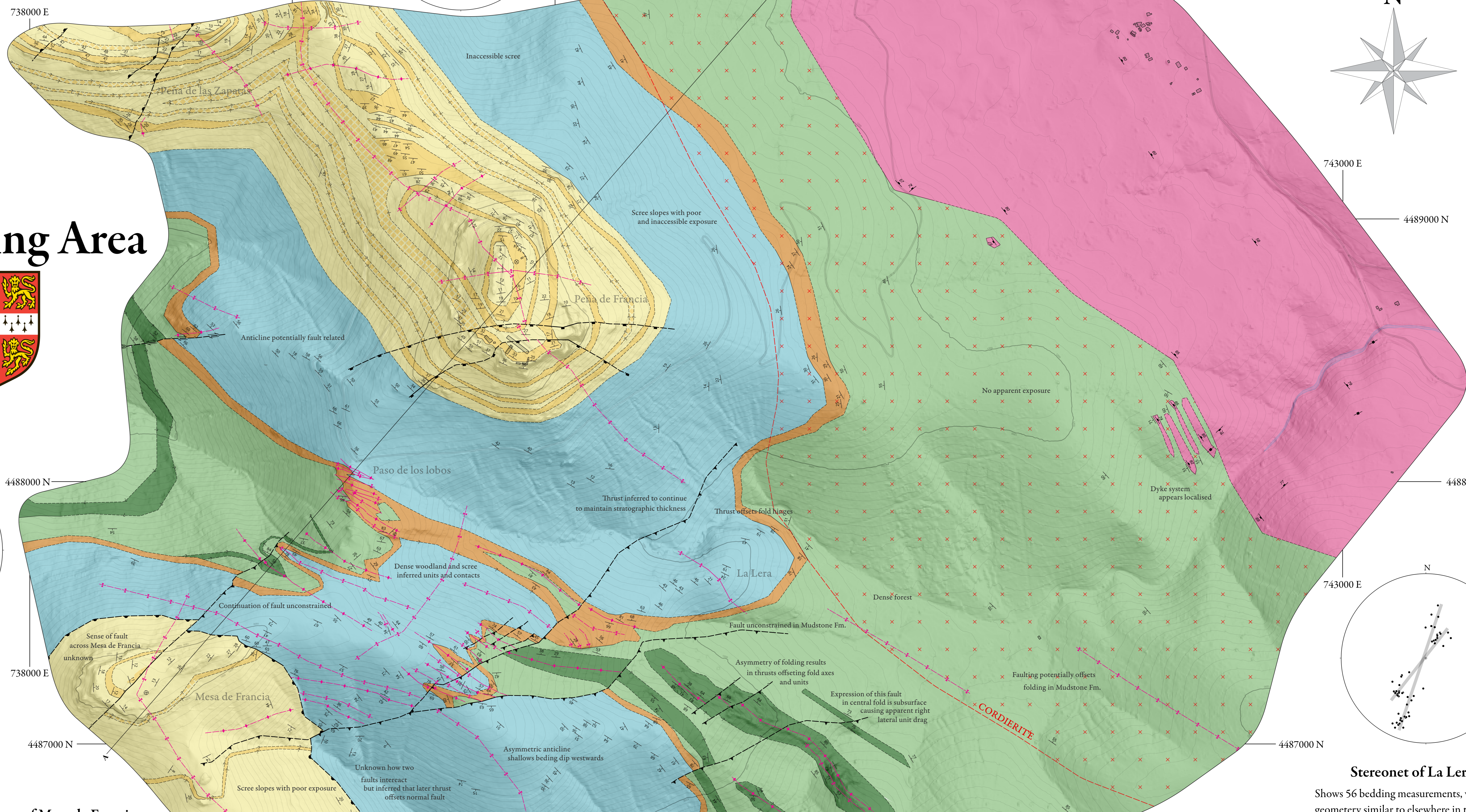
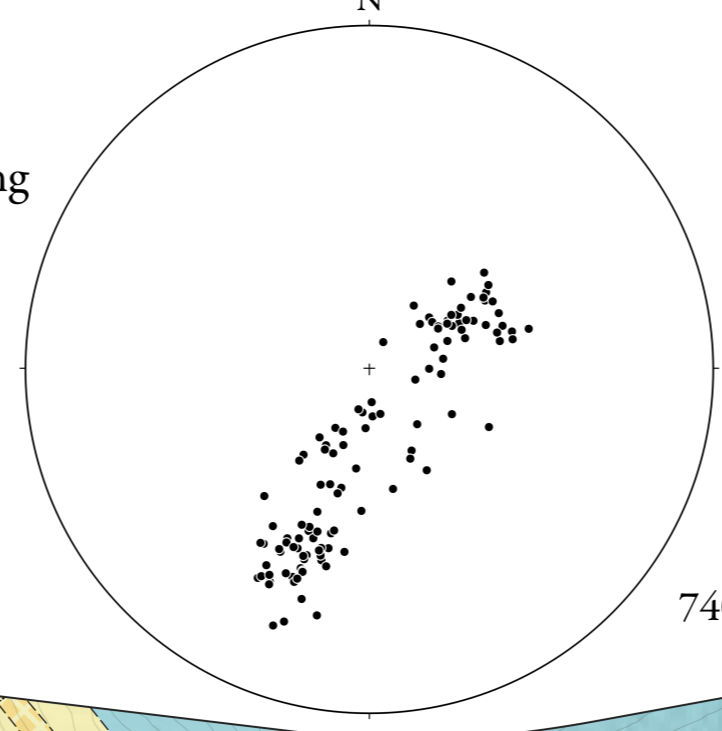


Stereonet projection showing the distribution of 392 bedding measurements plotted as poles to planes. The systematic clustering and spread of these points along a great circle is suggestive of two generations of folding. Grouping based off planar slicing. Map shows geographic grouping.



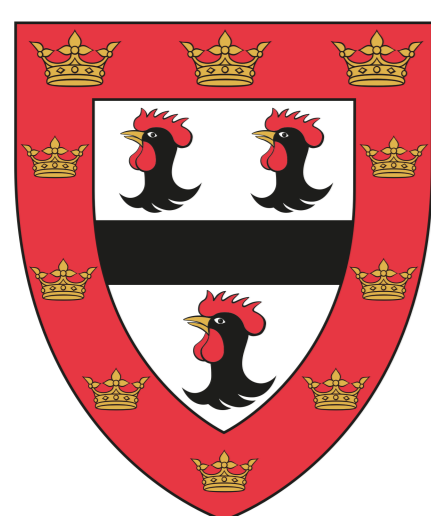
Stereonet of Peña de las Zapatas

Stereonet of 116 bedding measurements, showing similar fold geometry to Peña de Francia. Faulted regions excluded.



Mapped at 1:10 000
Rescaled and printed at 1:7000
Projection: ETRS89 / UTM zone 29N to True North
Base Map created from BTN25 by Instituto Geográfico Nacional

Geological Map of Peña de Francia and the Surrounding Area



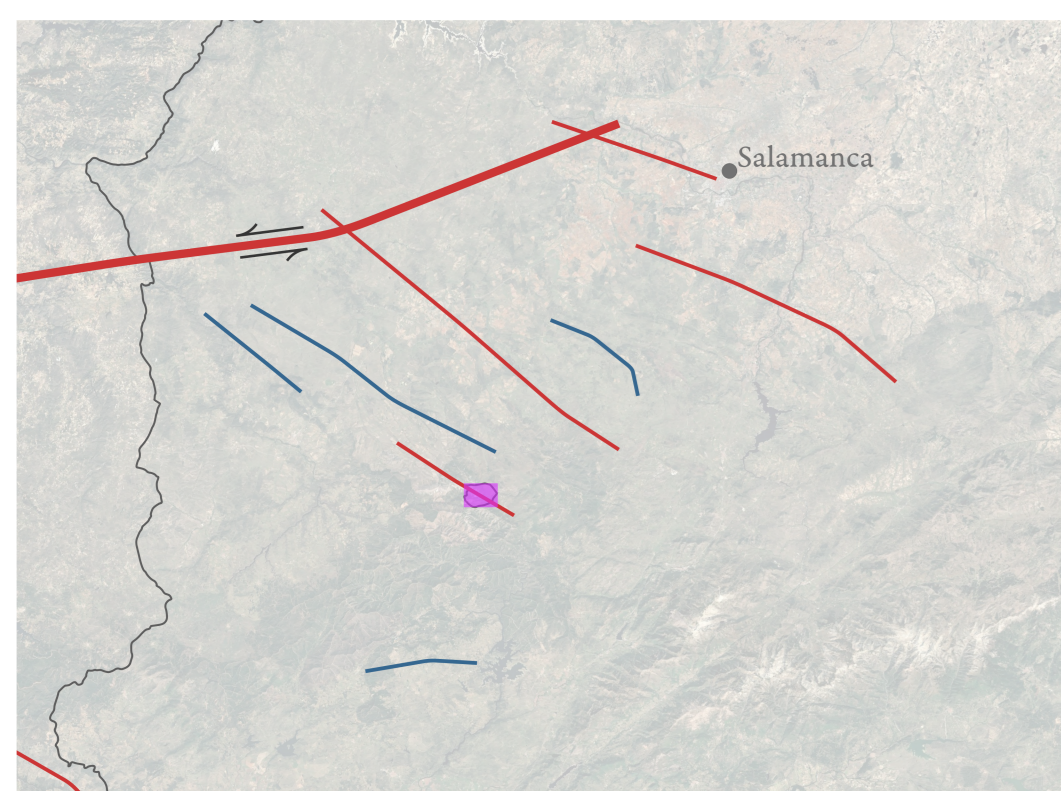
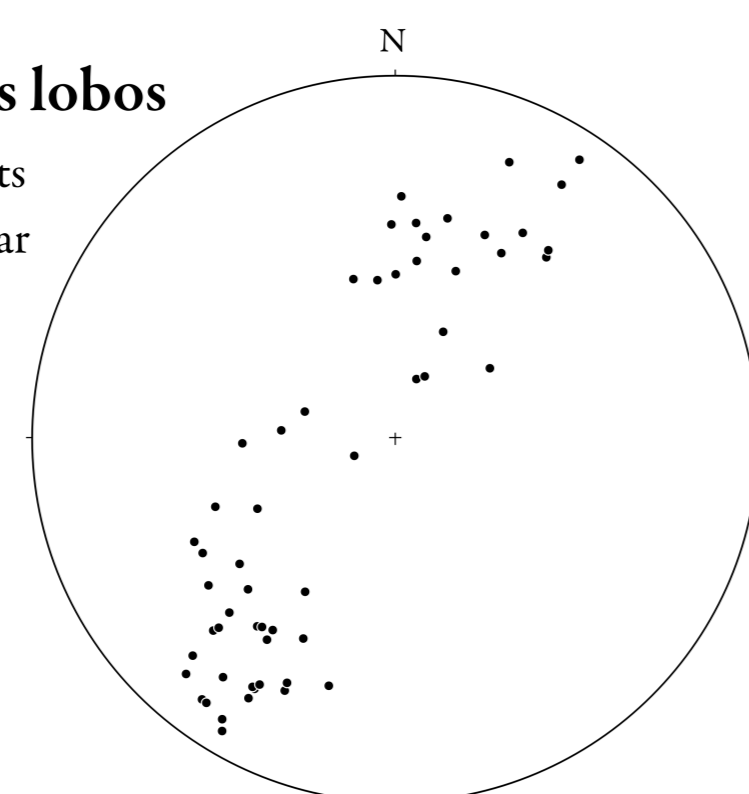
Thomas Holland
Jesus College, Cambridge



January 2025

Stereonet of Paso de los lobos

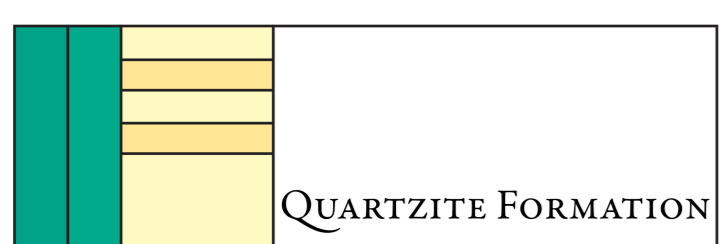
Shows 56 bedding measurements across the fold chain, with similar overall geometry to elsewhere. A wide spread to the data, likely due to minor variations within each fold in the chain.



Central Iberian Zone major folds proximal to study area formed during Variscan tectonic events (after R. Diaz et al. 2016, see report). Blue and red lines show folds formed during the first and third deformational stages, respectively. Second deformational stage record predominantly through extensional deformation. This study area in purple. Satellite Imagery from Google Maps

Legend

A—A Cross section
Geological contacts



Stereonet of La Lera

Shows 56 bedding measurements, with fold geometry similar to elsewhere in the

